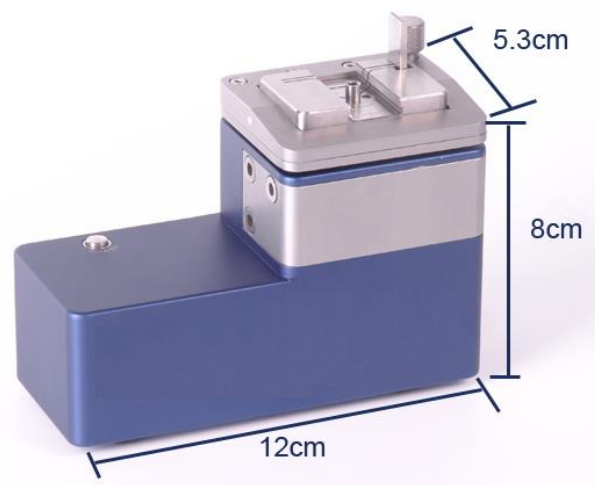


CA3005 SANA mini Portable Interferometer

Technical Specification V1.00

April, 2016



 UC INSTRUMENTS CORP.

www.ucinstruments.com

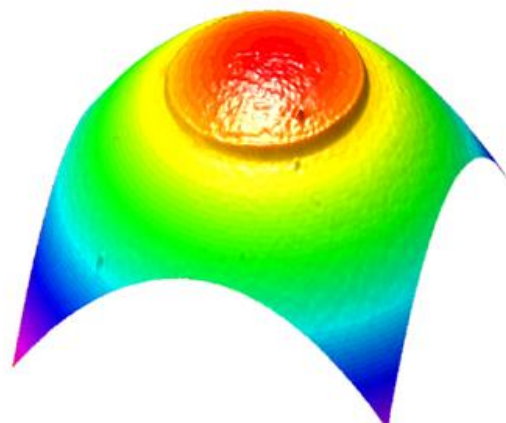
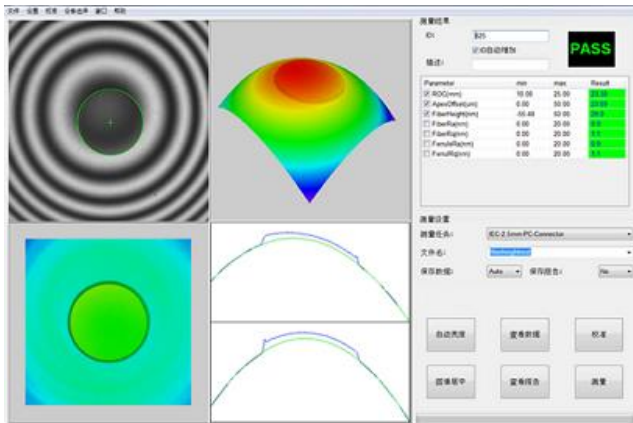
CA3005 SANA mini Portable Interferometer

(Ver 1.00)

CA3005 SANA mini is a portable, non contact fiber endface interferometer for single fiber connector. This interferometer has a high performance while the size of the instrument is incredible small. SANA mini need only a USB link to work without any external power supplies. It can test the geometry parameters of single fiber connectors such as radius of curvature, apex offset and fiber height. The data and report are generated in excel format and it is very helpful for management and analysis. SANA mini is a suitable interferometer for field usage.

Features:

1. Portable fiber endface interferometer
2. 1 USB needed to provide data link and power supply
3. Auto centering fiber
4. Only 2s need for single measurement
5. Bare fiber and bare ferrule measurement
6. Easy PC /APC changing
7. Series of fixtures
8. User friendly Interface and excellent 3D Image



Application:

Test FC/PC、SC/PC、ST/PC、E2000/PC、DIN、FC/APC、SC/APC single fiber connectors;

Test LC/PC、MU/PC、LC/APC single fiber connectors.

Specification:

Specification			
Item	Range	Repeatability	Reproducibility
ROC *(mm)	1 to flat	0.1%	0.2%
Fiber Height*(nm)	-160~+160	+/-1	+/-2
Apex Offset*(um)	0~200	+/-0.5	+/-1.5
APC Angle*(°)	0(PC) or 8(APC)	0.02	0.03
Speed(s)	2.5s		
Light Source	Red light LED		
Weight	0.8kg(Mainframe)		
Size	L12*W5.3*H8(cm)		

*Sigma Values

Contact Information

United States:

UC INSTRUMENTS CORP.

3652 Edison Way

Fremont, CA 94538

USA

Tel: 1-510-366-7353

Fax: 1-510-795-1795

www.ucinstruments.com

Product specifications and descriptions in this documentation subject to change without notice.

Copyright © 2008 UC INSTRUMENTS CORP.

July., 2008

30000002 V1.00

Product specifications and descriptions in this documentation subject to change without notice.

Copyright © 2008-2016 UC INSTRUMENTS CORP.