

# CA3001 SmartCheck Intelligent Fiber Endface Inspector

Technical Specification V1.00

April, 2016



 UC INSTRUMENTS CORP.

[www.ucinstruments.com](http://www.ucinstruments.com)

# CA3001 SmartCheck Intelligent Fiber Endface Inspector

(Ver 1.00)

CA3001 SmartCheck  
Intelligent Fiber Endface Inspector

**1,2 ..... 72 Cores Test**

**Auto Analyze**

**Auto Focus**

**Auto Generate Report**

**Auto Change Fiber**

## Features:

### Eliminates Human Factor

The system equips high-performance software, it can identify slightest defects and scratches in the endface. Changing operator will not affect the result.

### High Test Speed

SmartCheck is able to change the fiber cores automatically. It can test 12 cores fiber connector in 5s.

### Test In One Click

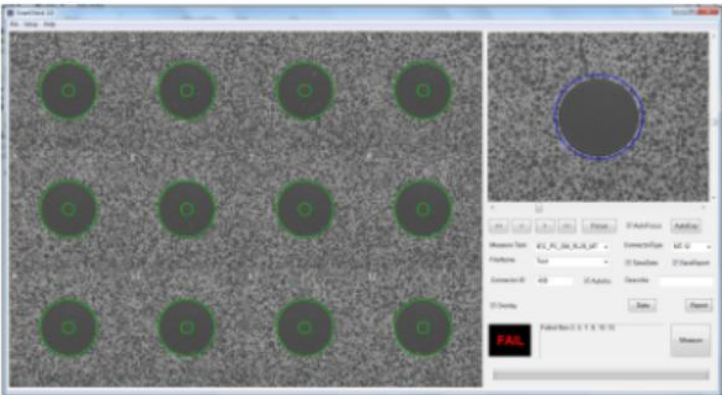
The system can focus, change cores and analyze the endface automatically after click "measure" button, the report will be generated after the test.

# Applications:

## Designed for MT

SmartCheck is designed for MT endface inspection and makes the inspection intelligent. It is also able to inspect single fiber connector.

## Auto Analyze



SmartCheck can identify slightest defects and scratches by high performance software. It eliminates human factors and increases efficiency and reliability of test.

## Complete Report

The complete test report is generated in EXCEL format. It is easy to manage and analyze and increase the quality of the endface. The test report also makes endfaces traceable.

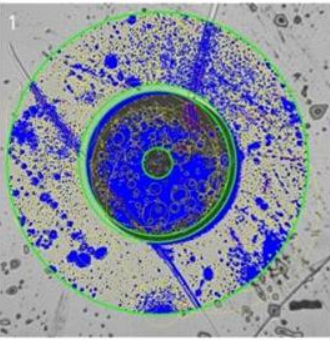
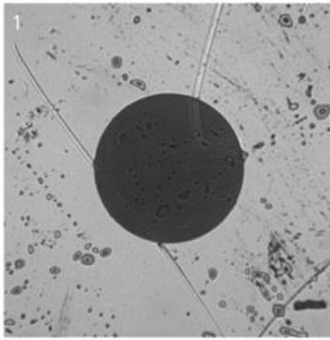
## Elegant Designs

SmartCheck has excellent designs with high operability and complies with the relevant safety standards

### TEST REPORT

CA3001 SmartCheck  
UC INSTRUMENTS CORP.

ID	14			<b>FAIL</b>		
Describe	2.5MM光纤-1					
Company	Dimension					
Date	27/08/2013	Time	14:35:41			
Zone Name	Diameter(um)		Defects		Scratches	
	Inner	Outer	Count	Result	Count	Result
Zone A	0	25	17	FAIL	0	PASS
Zone B	25	120	842	FAIL	117	PASS
Zone D	130	250	4252	FAIL	206	PASS

Signer: \_\_\_\_\_

## Specification:

Items	Parameters
Optical magnification	20X
Resolution	0.27um
Compatible connectors	Single fiber, MTRJ, MTP,MPO(2-72 cores)
Test Speed	5s(12 cores, without autofocus)
Range	6mm*15mm
Data Link	USB2.0
Power Supply	DC 24V

## Contact Information

### United States:

#### UC INSTRUMENTS CORP.

3652 Edison Way

Fremont, CA 94538

USA

Tel: 1-510-366-7353

Fax: 1-510-795-1795

[www.ucinstruments.com](http://www.ucinstruments.com)

Product specifications and descriptions in this documentation subject to change without notice.

Copyright @ 2008 UC INSTRUMENTS CORP.

July., 2008

30000002 V1.00

Product specifications and descriptions in this documentation subject to change without notice.

Copyright @ 2008-2016 UC INSTRUMENTS CORP.